

STORM-PRO-HR

LOW-PROFILE HURRICANE-RATED LITE KIT

Anemostat
DOOR PRODUCTS

FOR 1 3/4" DOORS

- 20 Ga. Galvanneal A40 Steel
- Mitered and Welded Corners
- Countersunk Mounting Screw-Holes
- #8 X 1 3/4" Phillips Head SMS
- Maximum Order Size: 30" X 64"
- Available in Uneven and Fractional Sizes
- Gray Primer (GPZ) Powder Coat Finish
- 1/2" Laminated Glass: 2 pcs. 3/16" Clear Glass with PVB Interlayer
- Structural Silicone Sealant DOW 995
- Siliconized Acrylic Caulk, White

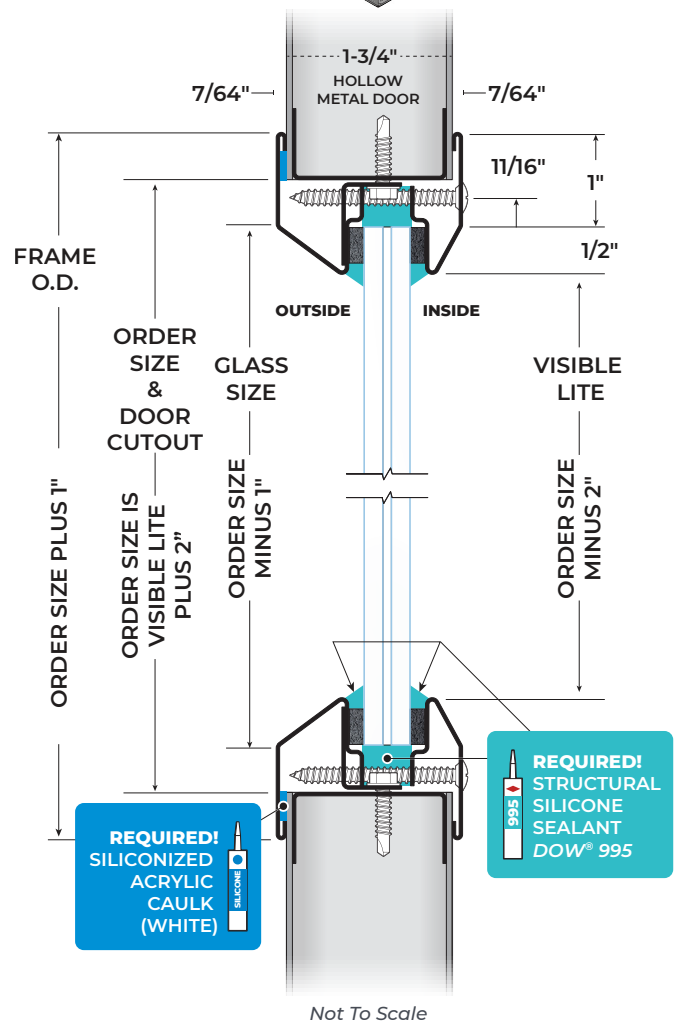
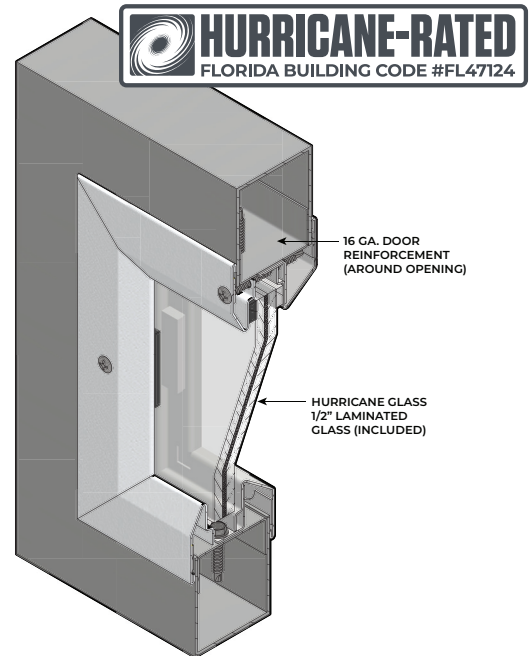
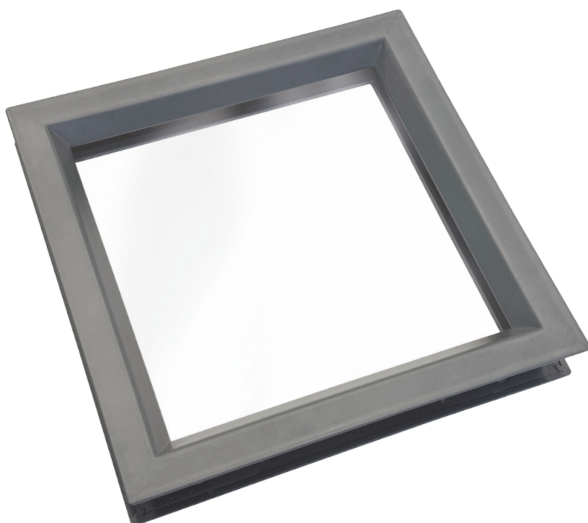
Available Options

- Powder Coat Color Options - See Page L3
- Torx Security Screws
- Zinc Electroplating

Hurricane-Rated

- Florida Building Code #FL47124
- Design Pressure = +/- 75 PSF
Missile level "D" and includes Wind Zone 4 as defined in ASTM E 1996 and FBC Sections 1609.1.2.2 & R301.2.1.2.1.
- Meets the water infiltration requirements for the "HVHZ."
- Hazard - Hurricane

This Product is Not Rated for Use on Fire-Rated Doors



Designed for Use on 1 3/4" Thick Doors Manufactured Within Door Industry Tolerance of +/- 1/16".