

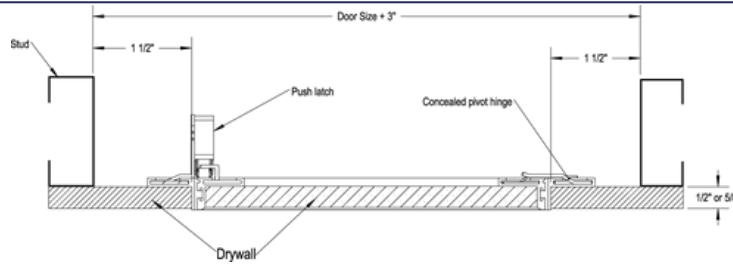
TECHNICAL DATA SHEET • SPECIFICATIONS

RECESSED ALUMINUM ACCESS DOOR WITH HIDDEN FLANGE
Concealed push latches, concealed free-pivot hinge

RAL-00

INSTALLATION

Technical drawing RAL-00



STANDARD DIMENSIONS AND APPEARANCE

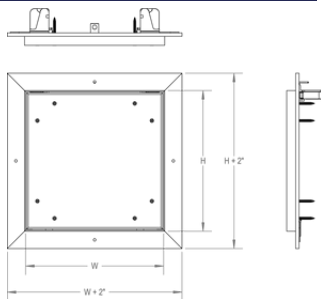
Dimensions • W X H		Recessed 1/2" Number of locks	Weight	
inches	mm		lbs	KG
8 x 8	203 x 203	2	2.3	1.0
12 x 12	304 x 304	2	3.5	1.6
16 x 16	406 x 406	2	4.9	2.2
18 x 18	457 x 457	2	5.8	2.6
20 x 20	508 x 508	2	6.7	3.0
24 x 24	609 x 609	2	8.8	4.0
36 x 36	914 x 914	2	16.9	7.7
24 x 48	609 x 1219	2	15.5	7.0

Your odd sizes: Made in 15 days

Dimensions • W X H		Recessed 5/8" Number of locks	Weight	
inches	mm		lbs	KG
8 x 8	203 x 203	2	2.8	1.3
12 x 12	304 x 304	2	4.4	2.0
16 x 16	406 x 406	2	6.5	3.0
18 x 18	457 x 457	2	7.8	3.5
20 x 20	508 x 508	2	9.1	4.1
24 x 24	609 x 609	2	12.2	5.5
36 x 36	914 x 914	2	24.2	11.0
24 x 48	609 x 1219	2	22.1	10.0

Your odd sizes: Made in 15 days

Rough wall opening is door size + 3/8" or + 9.5 mm



OTHER TECHNICAL INFORMATION

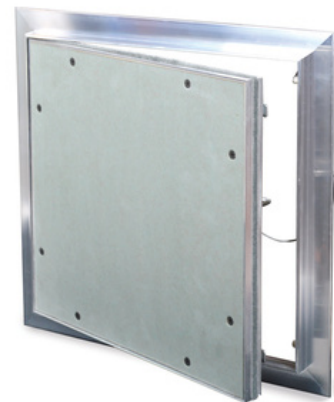
For wall installation, hinges must be located along the floor side (width).

DESCRIPTION AND MATERIAL SPECIFICATION

Material	Mill Finish Aluminium extrusion with mold tough drywall inlay
Hinge	Concealed free-pivot hinge, located on the first dimension (width)
Lock / Latch	Concealed push latch(es)
Finish	Mill Finish Aluminium extrusion with mold tough drywall inlay
Packaging	Individually wrapped, 1 door per box
Removable door	Yes (with retaining cables)
Gasketing	Dust and moisture resistant gasket

POPULAR OPTIONS

Lock / Latch	Key-operated cylinder cam latch (-10), screwdriver-operated cylinder cam latch (-220)
Other	Double-leaf (-180)



PROJET DATA

Project:	Date:	QTY	W	H
Architech:				
Dealer:				
Contractor:				
Location:				

Tagging instructions:
Special instructions:
Options:
Submittal approval: (Signature or stamp)

OPTIONS

This comprehensive list includes all available options. Please consult our catalog or contact our customer service to verify the feasibility of your chosen combination.

LOW SECURITY LOCKING MECHANISM



- 35** Screwdriver operated cam latch



- 220** Screwdriver operated cylinder Cam latch



- 80** Ring/tool key operated slam latch



- 55** Hex head slam latch and ring key operated slam latch



- 30** Slide latch



- 50** Allen hex head cam latch

HANDLES



- 25** WITH KEY - 4" handle and key operated cam latch



- 100K** Key-operated recessed handle cam latch with cap over key path



- 20** WITHOUT KEY - 4" handle operated cam latch



- 22** WITHOUT KEY - 4" handle operated slam latch



- 21** WITHOUT KEY Fixed 4" handle



- 26** WITHOUT KEY - L handle

MEDIUM SECURITY LOCKING MECHANISM



- 10** Key-operated cylinder cam latch



- 15** Mortise cam latch preparation
- 15C** Mortise cam latch preparation, keyed differently
- 15CKA** Mortise cam latch preparation, keyed alike



- 85** Mortise slam latch



- 85C** Mortise slam latch with cylinder
- 85CKA** Mortise slam latch cylinder keyed alike



- 90** Pinned hex head cam latch



- C** Cylinder cam latch, keyed differently



- CKA** Cylinder cam latch, keyed alike

MATERIALS



- GS** Galvanneal steel



- AL** Aluminum



- SS** Stainless steel



- CR** Cold rolled steel

HIGH SECURITY LOCKING MECHANISM



- 40** Mortise deadbolt lock



- 40C** Mortise Deadbolt Lock with Cylinder, keyed differently



- 40CKA** Mortise deadbolt lock with cylinder, keyed alike



- 99** Inside release thumbturn for mortise deadbolt lock



- 45** Mortise preparation for detention deadbolt lock



- 46** Detention deadbolt lock



- 47** CIDetention deadbolt Key

OTHERS



- 60** Gasket



- 160** Holding cable



- 240** Masonry anchors