

# TECHNICAL DATA SHEET • SPECIFICATIONS

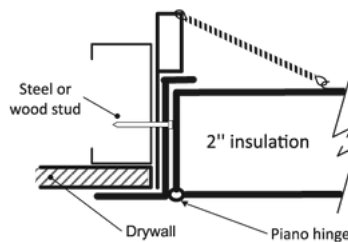
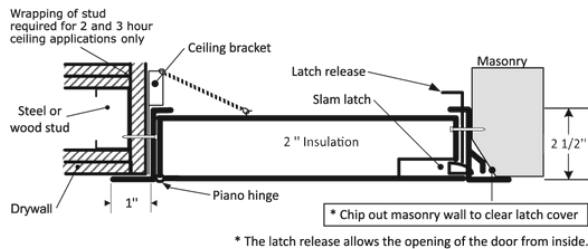
## FIRE-RATED INSULATED ACCESS DOOR WITH EXPOSED FLANGE

Mortise Cylinder operated slam latch, piano hinge (Mortise Cylinder is Optional)

PFI-85

### INSTALLATION

Technical drawing PFI-00



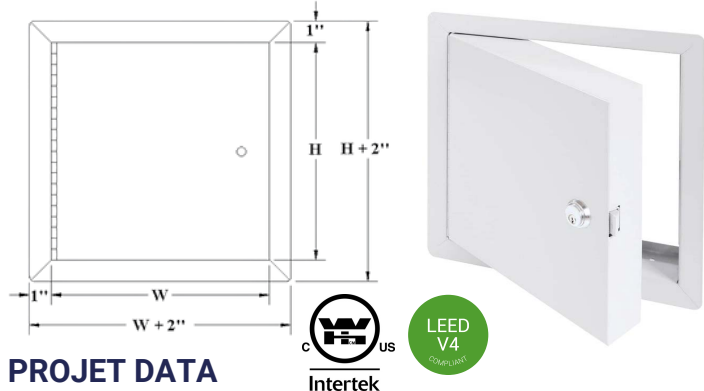
Authorities Having Jurisdiction (AHJ) should be consulted in all cases as to the particular requirements that apply to the installation and use of fire-rated access doors.

### STANDARD DIMENSIONS AND APPEARANCE

Dimensions • W X H		Number of locks	Weight	
inches	mm		lbs	KG
8 x 8	203 x 203	1	6.7	3.0
10 x 10	254 x 254	1	8.7	4.0
12 x 12	304 x 304	1	11.0	5.0
14 x 14	355 x 355	1	13.4	6.1
16 x 16	406 x 406	1	15.6	7.1
18 x 18	457 x 457	1	18.8	8.5
22 x 22	558 x 558	1	25.4	11.5
22 x 30	558 x 762	1	31.9	14.5
22 x 36	558 x 914	2	38.2	17.3
24 x 24	609 x 609	1	28.7	13.0
24 x 36	609 x 914	2	40.6	18.4
*24 x 48	609 x 1219	2	50.2	22.8
*30 x 30	762 x 762	1	40.5	18.4
*32 x 32	812 x 812	2	40.5	18.4
*36 x 36	914 x 914	2	54.5	24.7
*48 x 48	1219 x 1219	2	84.6	38.4

ODD SIZES AVAILABLE & MADE FAST. CONTACT MDI FOR MORE DETAILS

Rough floor opening is door size + 1/4" or + 6 mm



### PROJECT DATA

Project:	Date:	QTY	W	H
Architect:				
Dealer:				
Contractor:				
Location:				

### DESCRIPTION AND MATERIAL SPECIFICATION

<b>Material</b>	20-gauge galvalneal steel door and 16-gauge coldrolled steel frame
<b>Hinge</b>	Continuous piano hinge, located on the second dimension (height)
<b>Lock / Latch</b>	-85 Mortise Cylinder Slam Latch. Cylinder by others. <i>This includes the mortise slam lock but not the mortise cylinder. The door will be prepped for cylinder by others unless you add the optional cylinder (-85C option).</i>
<b>Finish</b>	High-quality white powder coat primer
<b>Packaging</b>	Individually wrapped, 1 door per box
<b>Insulation</b>	2" thick fire-rated mineral wool
<b>Inside panel release</b>	Mechanisms to allow panels to open from inside, standard on all doors over 12" x 12"

#### POPULAR OPTIONS

<b>Lock / Latch</b>	Key-operated cylinder cam latch (-10); Mortise deadbolt lock (-40, cylinder optional); Mortise slam latch (-85C, includes optional mortise cylinder)
<b>Handle</b>	Fixed 4" handle (-21), 4" handle-operated slam latch (-22)
<b>Material</b>	Stainless steel (SS)
<b>Other</b>	Neoprene gasket (-60), masonry anchors (-240)

#### FOR VERTICLE USE:

**Certified to standards:** UL 10B (2009), NFPA 252 (2012), CAN/ULC S104 (2010)

**Rating achieved:** 3 hours, neutral/negative pressure

**Maximum size:** 48" wide x 48" high (1,219 mm x 1,219 mm). Maximum area of 2,304 in<sup>2</sup>. Tolerance on height and width limitation is ± 3" (76 mm) as long as the area does not exceed 2,304 in<sup>2</sup>.

**Temperature rise:** 250°F (121°C) after 30 min. 450°F (232°C) after 60 min.

#### FOR HORIZONTAL USE:

**Certified to standards:** ASTM E119 (2012), CAN/ULC S101 (2007)

**Rating achieved:** 3 hours in non-combustible construction. 1 hour in combustible construction.

**Maximum size:** 24" X 36" (610 mm X 914 mm) (hinges and latches on the side of 36"). Tolerance on dimension limitations is ± 3" (76 mm) as long as the area does not exceed 864 in<sup>2</sup>.

**Temperature rise:** Within allowable per ASTM E119 and CAN/ULC S101

**NOTE:** Product image to the left shown with optional mortise cylinder (-85C)

Tagging instructions:

Special instructions:

Options:

Submittal approval:  
(Signature or stamp)