

# AQL Series

Single, dual & multi-voltage ready modular power system



An out-of-the-box solution that offers unique performance and value.

The AQL Series of switching power supplies is an out-of-the-box solution that makes installation easier. It is modularly designed and available in 12 or 24 VDC single, dual and multi-voltage units.

## Features

### Standard Features

- Low battery cutoff protects batteries from deep discharge
- Dedicated fast charger prolongs battery life
- Enhanced surge immunity for input/output protection
- LockSafe keeps locks cooler by providing a separate, dedicated battery charging circuit
- OutSmart technology dual-color LED notification which prevents incorrect voltage application to locking devices [Green: 12 V | Blue: 24 V]
- Auxiliary output rated 1.4 A continuous
- Mix and match UL Listing
- Instant auto-switch to battery on AC loss
- Multi-voltage with B100
- Integrated Fire Alarm Interface (FAI) allows main output shutdown or disconnect on a per output basis when using an R8 output module
- MagnaCare® lifetime replacement, no-fault, no questions asked warranty

- ULC-S319 Listed
- CSA C22.2 #107.1
- RoHS Compliant

### Electrical

- 12 VDC or 24 VDC output
- 12 VDC & 24 VDC output (optional) with B100
- 120 or 230 VAC input

### Environmental

- Operating Temperature: 32° to 120° F [0° to 49° C]

### Max Shipping Weight

- 15.50 lbs [7 kg]

## Dimensions

- E1 14"H x 12"W x 4.5"D [355.6mm H x 304.8mm W x 114.3mm D]
- E2 20"H x 16"W x 4.5"D [508mm H x 406.4mm W x 114.3mm D]

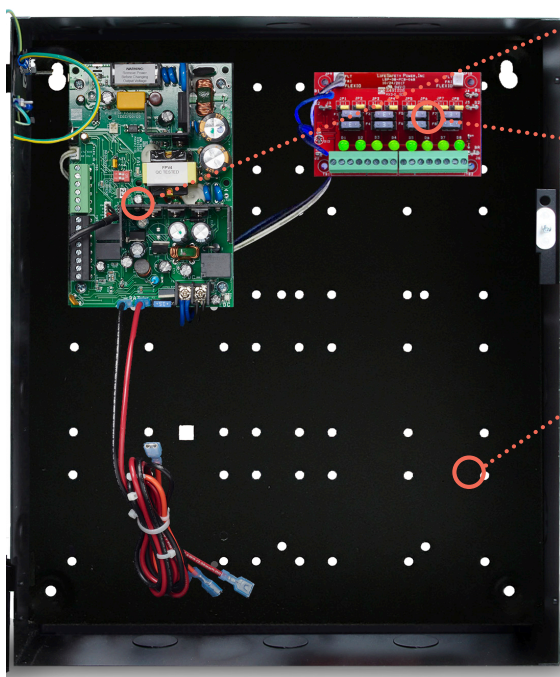
## Specifications

### Certifications

- UL 294 Listed
- UL 603 Listed
- UL 1076 Listed
- ULC-S318 Listed



# Step by Step Configuration



- 1** *Select One Power Supply Module*
  - AQL4
  - AQL102
  - AQL6
  - AQL104
  
- 2** *Select Required Modules\**
  - B100
  - R8
  - D8
  - R8P
  - D8P
  
- 3** *Choose Enclosure\*\**
  - E1
  - E2
  
- 4** *Combine to Generate Final Part Number*  
*Example:*  
 AQL4 - B100 + D8 + R8 + E1 =  
**AQL4-B100D8R8E1**

\*When ordering more than one module, indicate quantity before the part number to generate final part number; for example AQL4-3D8E1.

\*\*No enclosure = Module PCB only. Each module may be ordered separately.

## How to Order For additional guidance on available configurations, please visit [securitron.com](http://securitron.com)

POWER SUPPLY MODULE	SECONDARY VOLTAGE MODULE	AUXILIARY POWER DISTRIBUTION MODULE	LOCK POWER DISTRIBUTION MODULE	ENCLOSURE
<b>AQL4</b>	<b>-B100</b>	<b>D8</b>	<b>R8</b>	<b>E2</b>
<small>NOTE: The Power Supply provides a single voltage without the addition of a Secondary Voltage module (B100)</small>	<small>NOTE: The Secondary Voltage module utilizes power provided by the power supply that it is connected to and converts it to a secondary voltage; it does not provide additional power.</small>	<small>NOTE: Auxiliary Power Distribution modules provide up to (8) powered relay outputs.</small>	<small>NOTE: Lock Power Distribution modules provide up to (8) independently configurable relays outputs.</small>	
AQL4 4A @ 12VDC, 3A @ 24VDC	(blank)	D8 (1) Input   (8) Outputs	R8 (8) Configurable Outputs	E1 14H" x 12W" x 4.5D"
AQL6 6A @ 12VDC or 24VDC	B100 4A @ 5-18VDC	D8P (1) Input   (8) Outputs, Class 2 rated	D8P (8) Configurable Outputs, Class 2 rated	E2 20H" x 16W" x 4.5D"
AQL102 10A @ 12VDC				
AQL104 10A @ 24VDC				

## Models

MODELS	AMPERAGE	RATED VOLTAGE	INPUT VOLTAGE	TYPICAL OUTPUT VOLTAGE	MULTI-VOLTAGE READY	CLASS 2 OUTPUTS
AQL4*	4	12 VDC	120/230 VAC	12.5 or 25 VDC	Yes	Yes
	3	24 VDC				
AQL6	6	12 or 24 VDC	120/230 VAC	12.5 or 25 VDC	Yes	with PTC distribution boards
AQL102	10	12 VDC	120/230 VAC	12.5 VDC	Yes**	with PTC distribution boards
AQL104	10	24 VDC	120/230 VAC	25 VDC	Yes	with PTC distribution boards

\*AQL4 is field selectable. \*\*Multi-voltage of 5 to 9 VDC only

## AQL Modules

SECONDARY VOLTAGE	AUXILIARY POWER DISTRIBUTION	LOCK POWER DISTRIBUTION
Used for dual voltage in a single enclosure; it takes in one power voltage and converts it to another voltage (ex. 24VDC to 12VDC)	Ideal for distributing power to access control modules, card readers, cameras, request to exit devices	Ideal for distributing power to locks, through independently configurable relay outputs.
B100	D8 / D8P	R8 / R8P

## P Variants

Some AQL modules, like the D8 and R8 come with or without a P variant.

- Models without a P indicate that there are ATM style fuses used on the device. These fuses can be replaced if the fuse gets damaged.
- Models with a P indicate that there are PTC style outputs used on the device. This style is considered self-healing. These devices are Class 2 power limited, which is required in certain jurisdictions. Consult your local AHJ for more information.